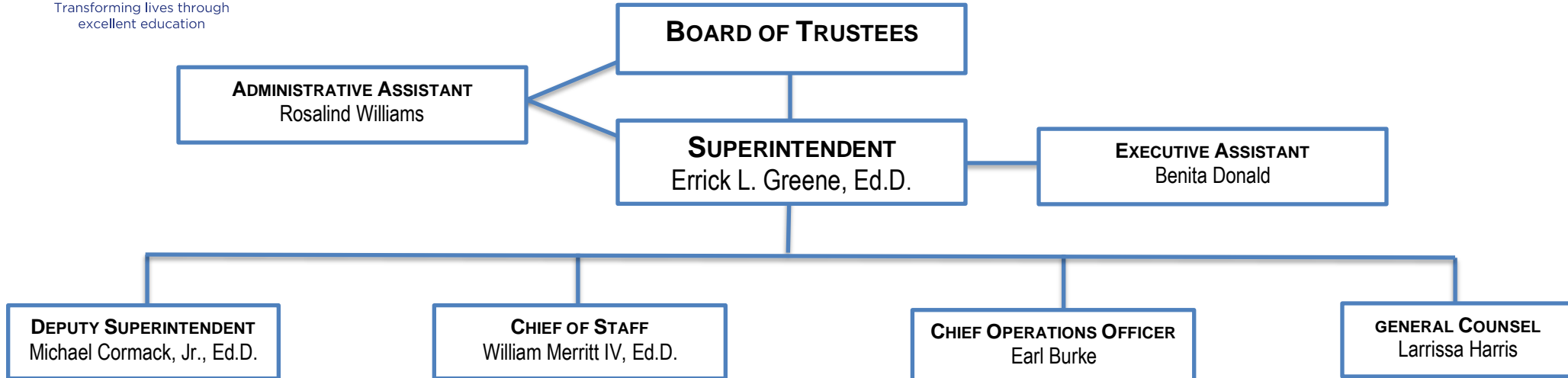
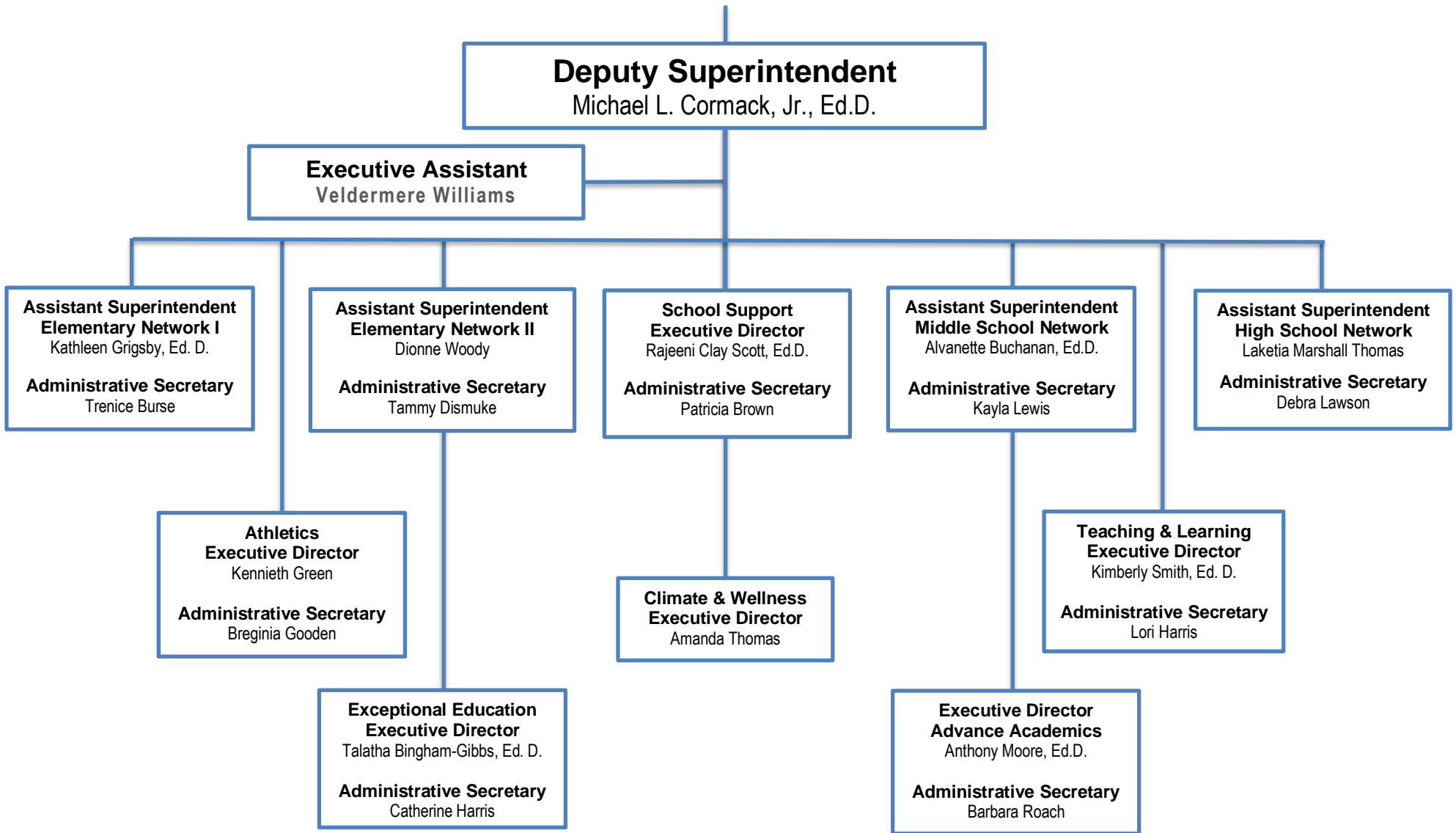


JACKSON PUBLIC SCHOOLS REORGANIZATIONAL CHART 2024-2025



DEPUTY SUPERINTENDENT



ASSISTANT SUPERINTENDENT

Assistant Superintendent Elementary Network I

Kathleen Grigsby, Ed. D.

Administrative Secretary

Trenice Burse

District Instructional Coach

Barbara Griffith-Edwards, Instructional Coach, ELA
Dr. Kierra Garner, Instructional Coach, Math
Dr. Dominique McInnis, Instructional Coach,

Barack H. Obama Elementary School

Stephanie Wilson, Principal

Bates Elementary School

Dr. Rachel Ellis-Coleman, Principal
Dr. Josie Blake, Assistant Principal

Boyd Elementary School

Joseph Collins, Principal
Dr. Queietasha Younger, Assistant Principal

Casey Elementary School

Vanessa Hinton-Dean, Principal

Galloway Elementary School

Dr. Linda Murray, Principal
Kristen Powell, Assistant Principal

Johnson Elementary School

Guyneisha Johnson, Principal
Stephanie Lockett, Assistant Principal
Anna Alderman, Assistant Principal

McWillie Elementary School

Dr. Sara Harper, Principal
Jennifer Jyles, Assistant Principal

North Jackson Elementary School

Jocelyn Smith, Principal
Ursula Watson, Assistant Principal

Oak Forest Elementary School

Camesha Hatchett, Principal
Millicent Steverson, Assistant Principal

Spann Elementary School

Lori Torrey, Principal
Machaela Barnes, Assistant Principal

Walton Elementary School

LaRoy Merrick, Principal
Denise Thaggard, Assistant Principal
Jarett Benson, Assistant Principal

Wells (Power)

Dr. Kescher Love Rankin, Principal

ASSISTANT SUPERINTENDENT

Assistant Superintendent Elementary Network II

Dionne Woody

Administrative Secretary

Tammye Dismuke

District Instructional Coach

April Benjamin, Instruction Coach, ELA
Katrina Jones, Instructional Coach, ELA
Benardytte Robinson-Stokes, Instructional Coach, Math
Jamie Profice, Instructional Coach, Science

Clausell Elementary School

Carla Baker Thomas, Principal

Green Elementary School

Dr. Jamaka Holman, Principal

Isable Elementary School

Catrina Crawford, Principal

John Hopkins Elementary School

Yasontas Burton, Principal
Dr. Nicol Sanders-Hemphill, Assistant Principal

Key Elementary School

Elana Tate, Principal

McLeod Elementary School

Dr. Cynthia Veals, Principal
Dr. Renalda Singleton, Assistant Principal

Pecan Park Elementary School

Dina Owens, Principal
Triana Davis, Assistant Principal
Melinda Wilcher, Assistant Principal

Timberlawn Elementary School

Dr. Lynn Horton, Principal

Van Winkle Elementary School

Ashanti Barnes, Principal

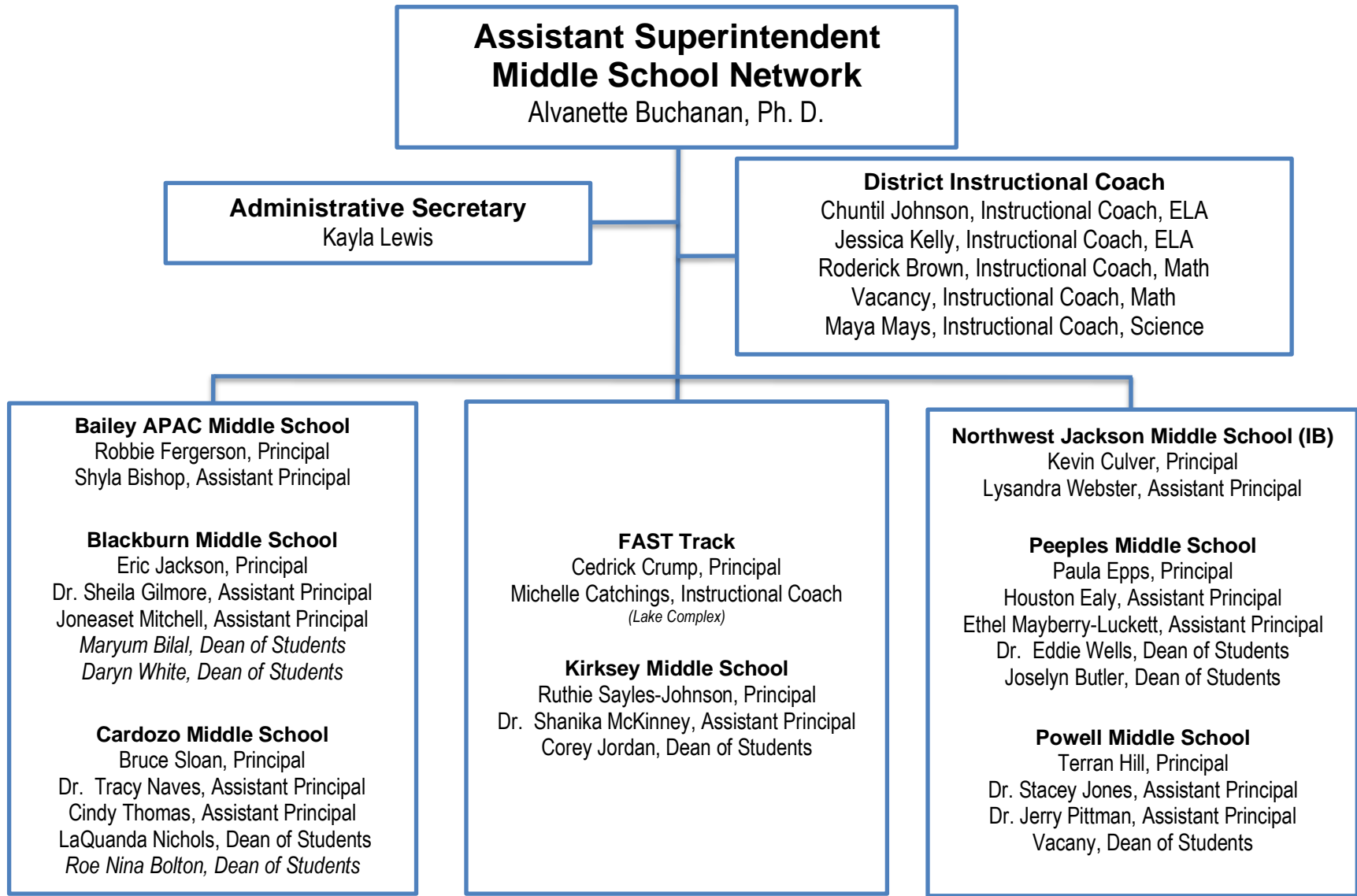
Shirley Elementary School

Kimberly Hulitt-Griggs, Principal
Varranda Love, Assistant Principal
Catreda Morgan, Assistant Principal

Wilkins Elementary School

Cheryl Brown, Principal
DeBorah Smith, Assistant Principal

ASSISTANT SUPERINTENDENT



ASSISTANT SUPERINTENDENT

**Assistant Superintendent
High School Network**
Laketia Marshall-Thomas

Administrative Secretary
Debra Lawson

College and Career Readiness Manager
Jana Williams

Director of Academics
Jannifer Norwood

District Instructional Coach

Wyatt Smith, Instructional Coach, ELA and Online Learning
Tanesha Miles, Instructional Coach, ELA
Adrienne McDowell, Instructional Coach, ELA

Christopher Evans, Instructional Coach, Math
Felisha Shelby, Instructional Coach, Math

Denavia Bell, Instructional Coach, Science

Kayla Vandeford, Instructional Coach, Intervention

Callaway High School

Dr. Shemeka McClung, Principal
Kelly Matin, Assistant Principal
Dr. Crystal Hill, Assistant Principal
Vacancy, Assistant Principal
Corice Anderson Greenwood, Dean of Students

Capital City Alternative School

Tanyatemeika Mason, Principal
Dewayne Harris, Assistant Principal
Dr. Emorie Griffin, Assistant Principal
Shelby Rutland, Assistant Principal

Career Development Center

Dr. Eric Cook, Principal
Calvin Melton, Assistant Principal
Anasha Caffey, Assistant Principal
Kenneth Devine, Assistant Principal

Forest Hill High School

Torrey Hampton, Principal
Patrease Edwards, Assistant Principal
Deandria Sylvester, Assistant Principal
Dr. Bradley Blake, Assistant Principal
Dr. Erica Gee Bradley, Assistant Principal
Jewel Jackson, Dean of Students
Fredrick Connors, Dean of Students

Jim Hill High School

Bobby Brown, Principal
Dr. Shalettha Wilson-Fisher, Assistant Principal
Nicole Dobbins, Assistant Principal
Vertis Holmes, Assistant Principal
Erica Stokes, Dean of Students

Lanier Junior Senior High School

Stacey Bailey, Principal
Miketa Davis, Assistant Principal
Olivia Knight, Assistant Principal
Rodney Johnson, Assistant Principal
Harold Stanfield, Assistant Principal

Murrah High School

Dr. Alonda Nicholson, Principal
Dr. Lisa Williams-Moore, Assistant Principal
Christopher Sylvester, Assistant Principal
Chris Hill, Assistant Principal
Holly Blackwell, Assistant Principal
Rekesha Gholar, Dean of Students

Provine High School

Roderick Smith, Principal
Kenyatta Durr, Assistant Principal
Dr. Collins Lanyuy, Assistant Principal
Keegan Love, Assistant Principal
Keith Gray, Dean of Students
Frankie Johnson, Dean of Students

JPS-Tougaloo Early College High School

Ashley Molden, Principal
(Tougaloo College)

Re-Engaging for All to Progress (REAP)

Dr. Shenetra Burse-Dawson, Principal
(Lake Complex)

Henley-Young Juvenile Center

Antonius Caldwell, Principal

Junior Reserve Officer Training Corp (JROTC)

Col. Fredrick Brown, DAI
(GN Smith Complex)

Environmental Learning Center (ELC)

Jeffery Gibson, Coordinator

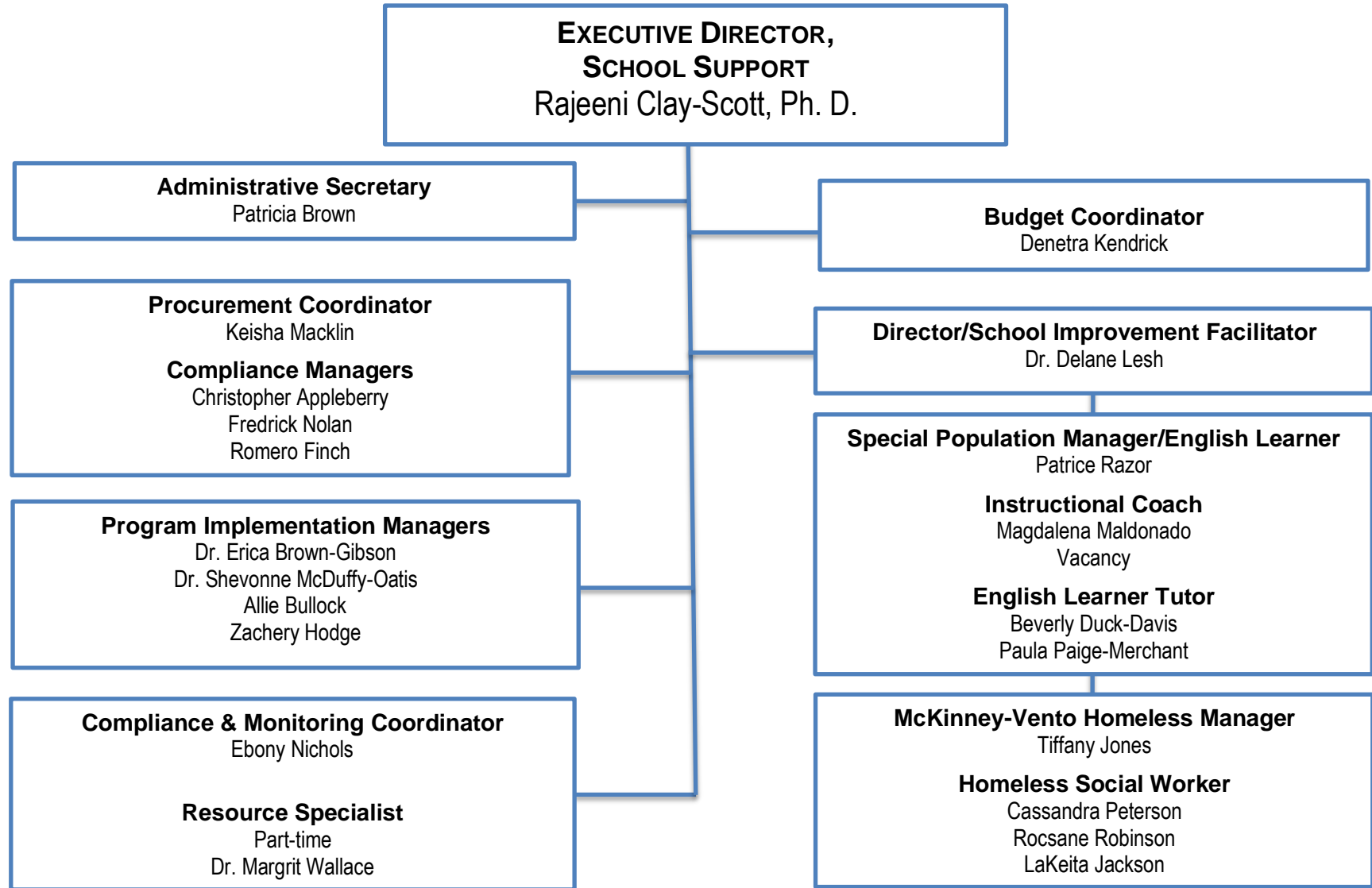
Jackson Middle College

Dr. Shelita Brown, Principal
Victoria Scantlebury, Coordinator

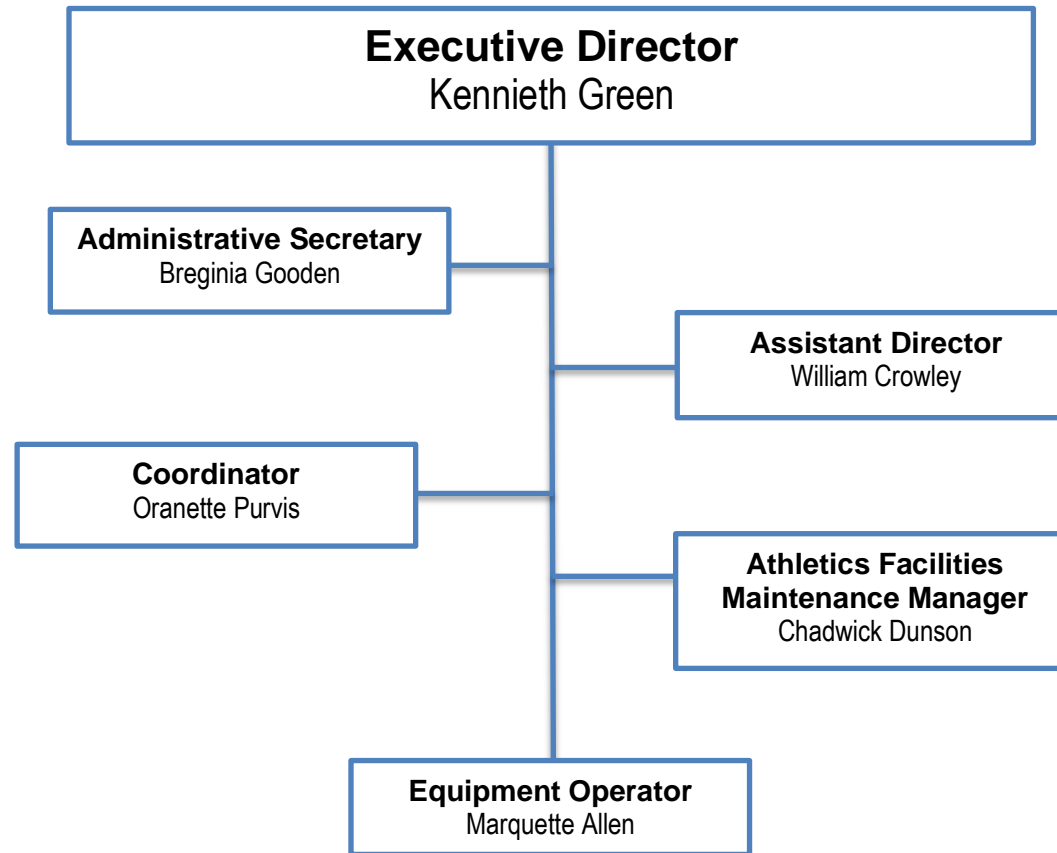
JPS Virtual High School Academy Program

Dr. Shelita Brown, Principal
(Lake Complex)

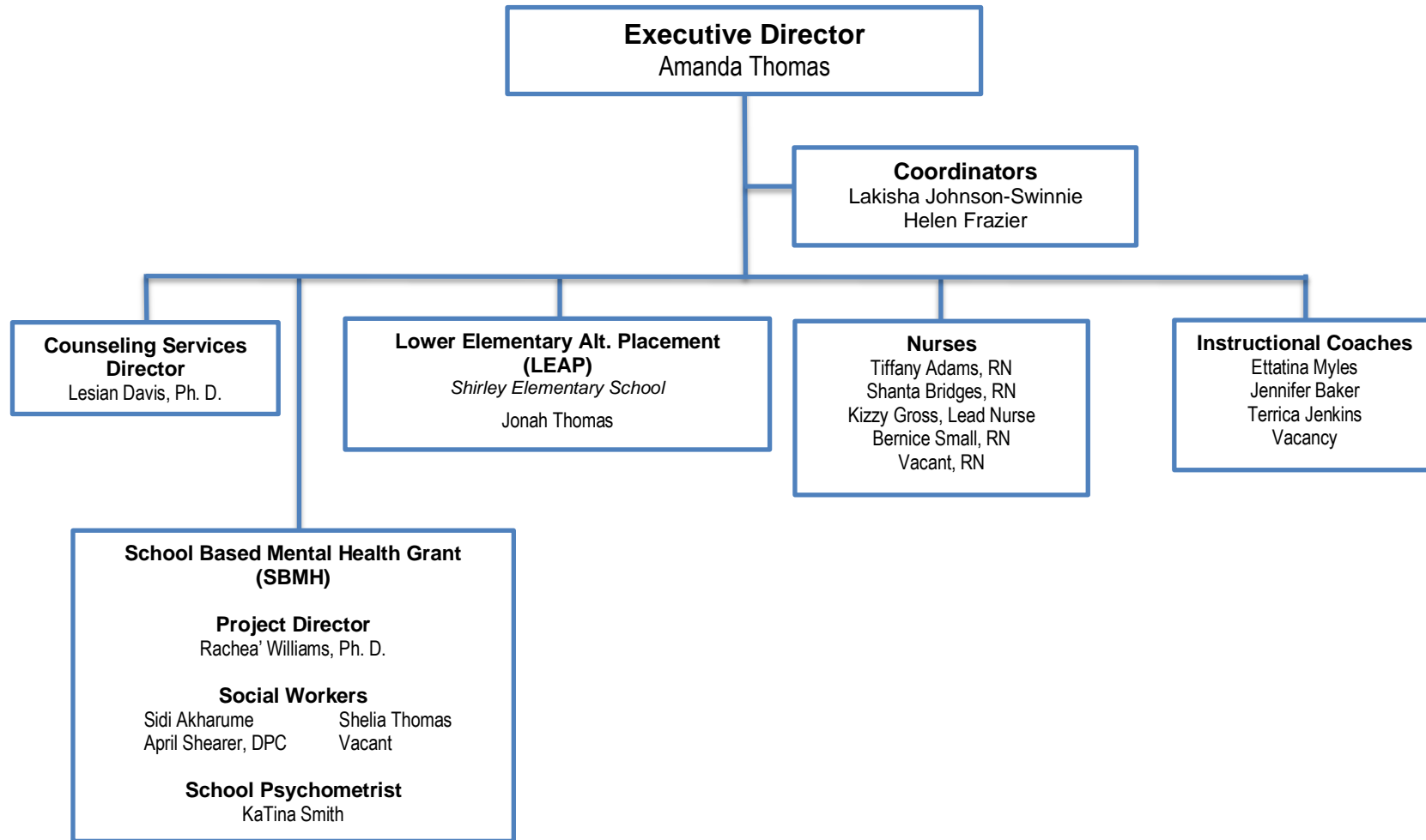
OFFICE OF SCHOOL SUPPORT



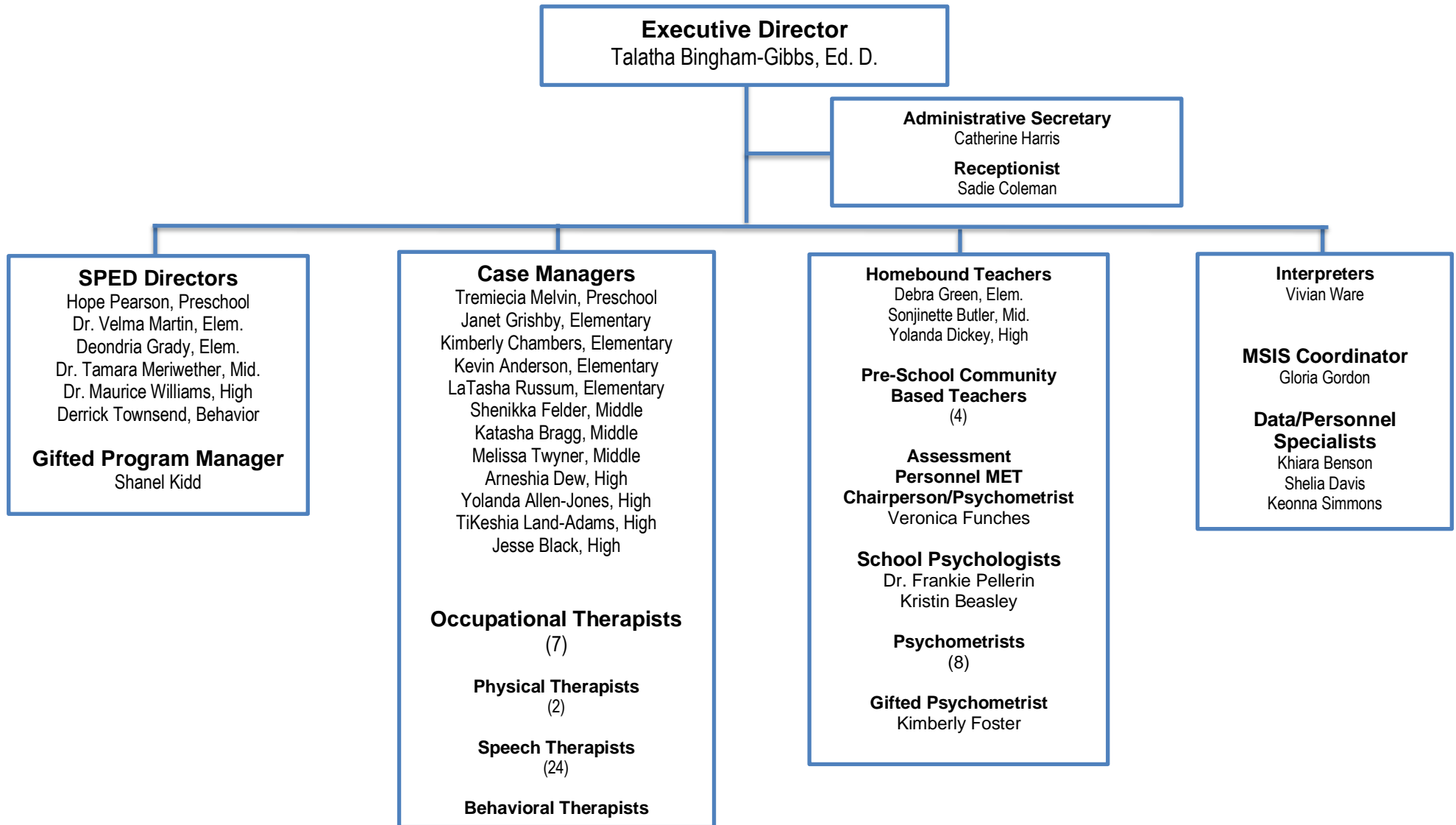
ATHLETICS



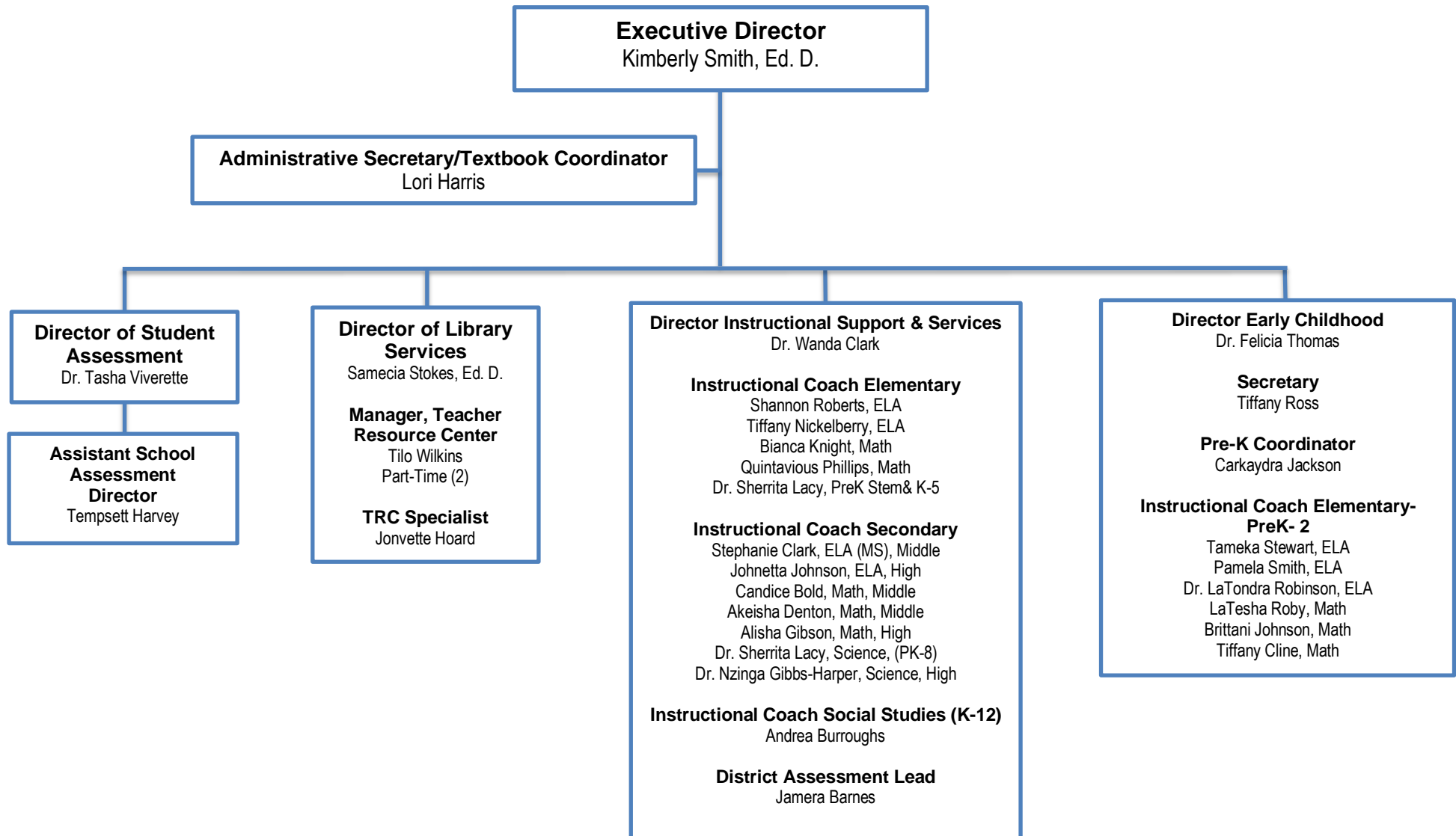
CLIMATE AND WELLNESS



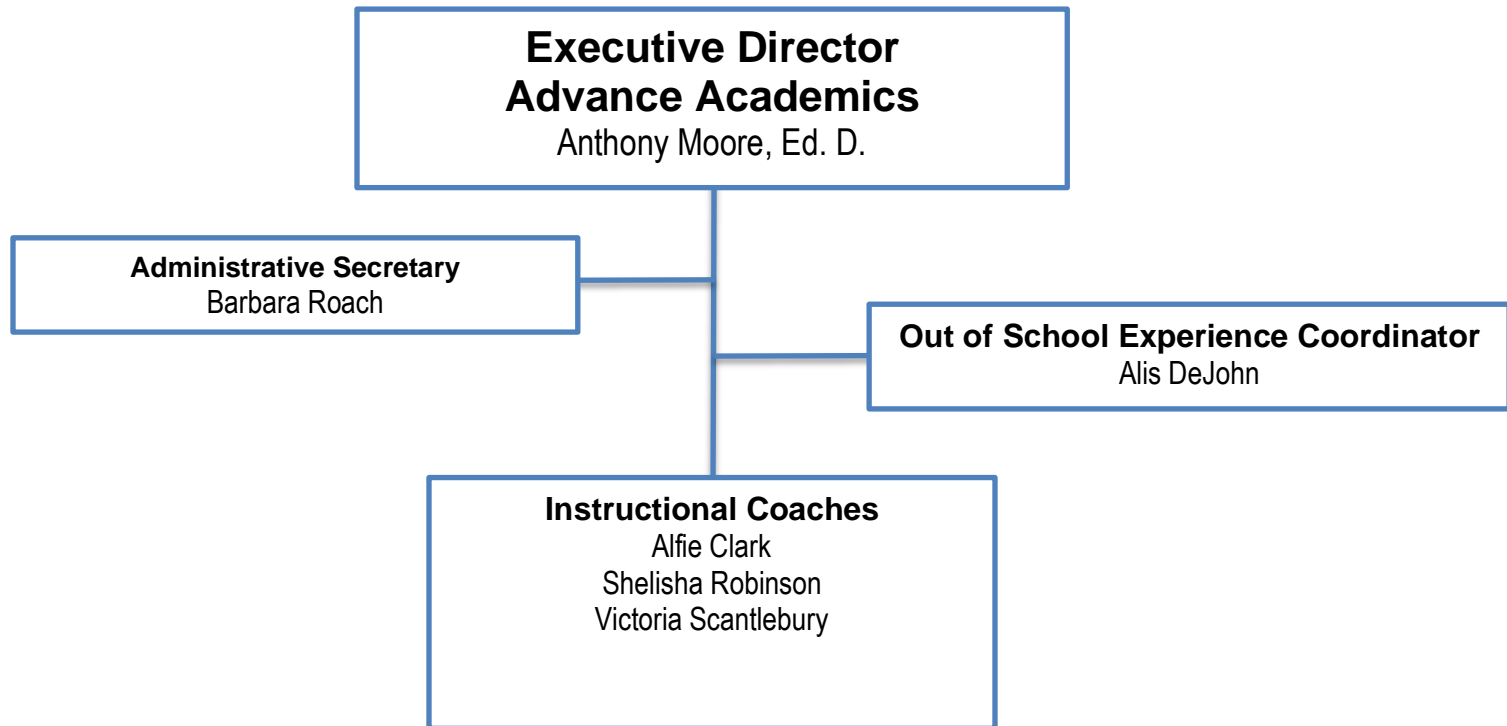
EXCEPTIONAL EDUCATION



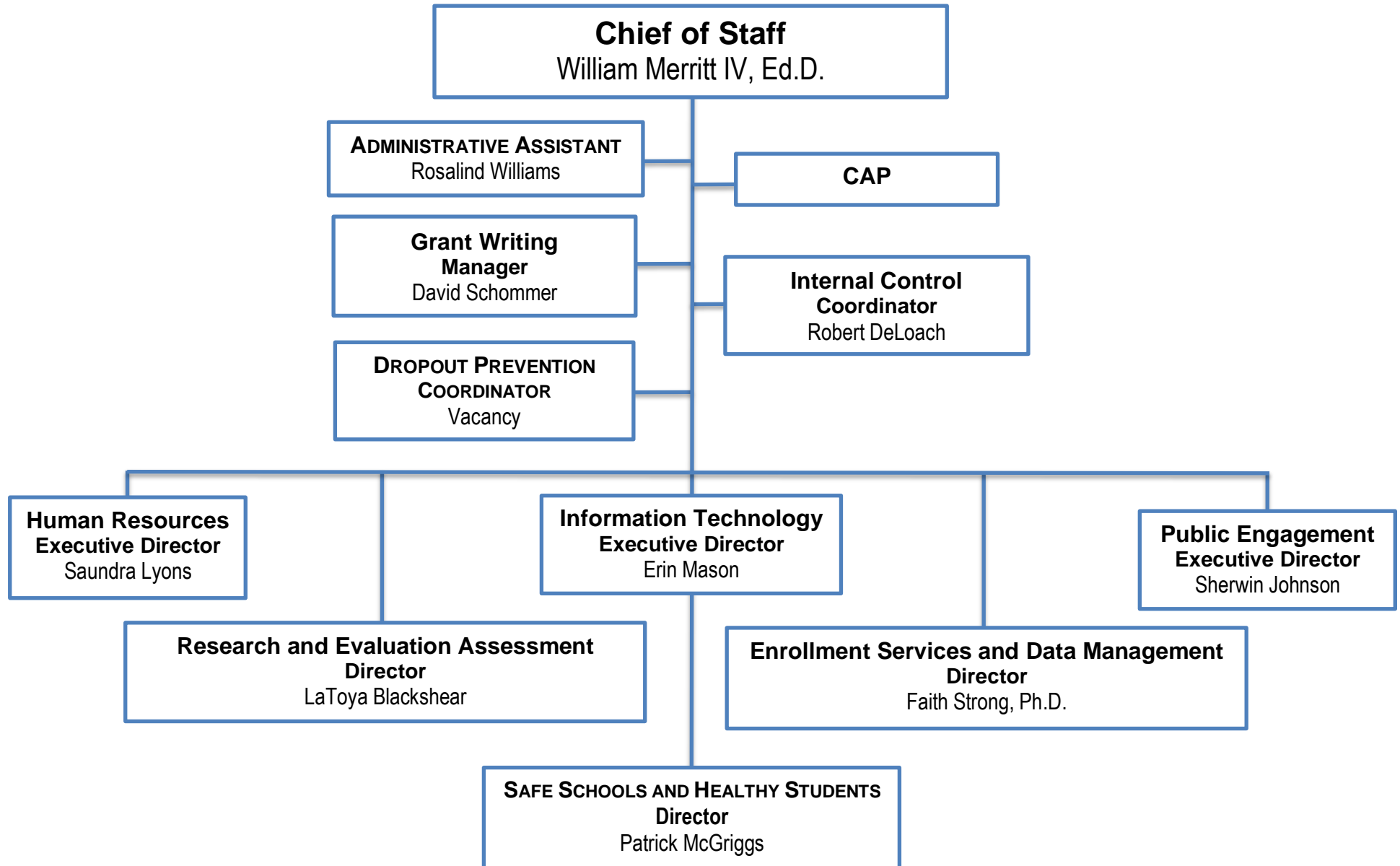
TEACHING AND LEARNING



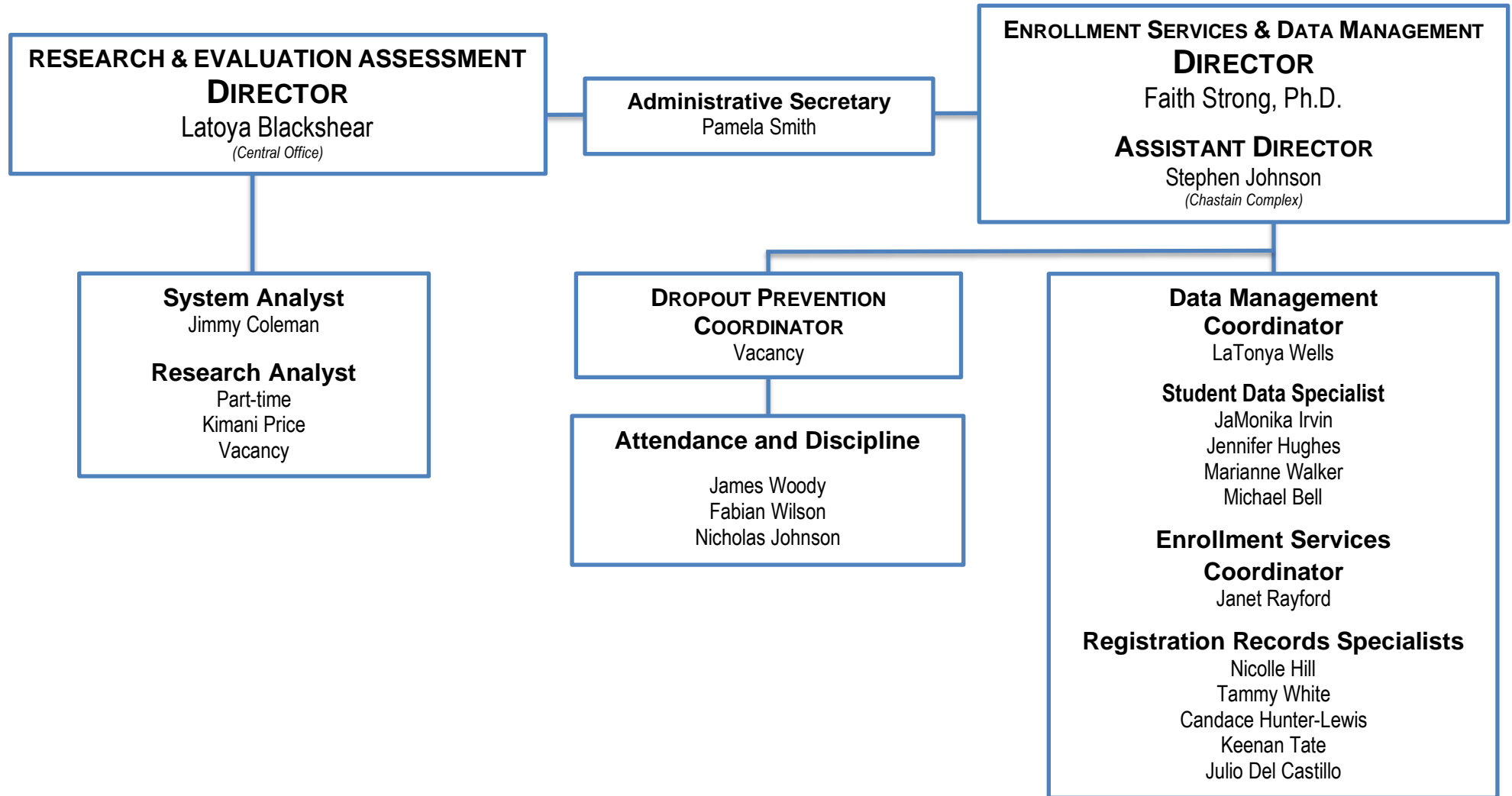
ADVANCE ACADEMICS



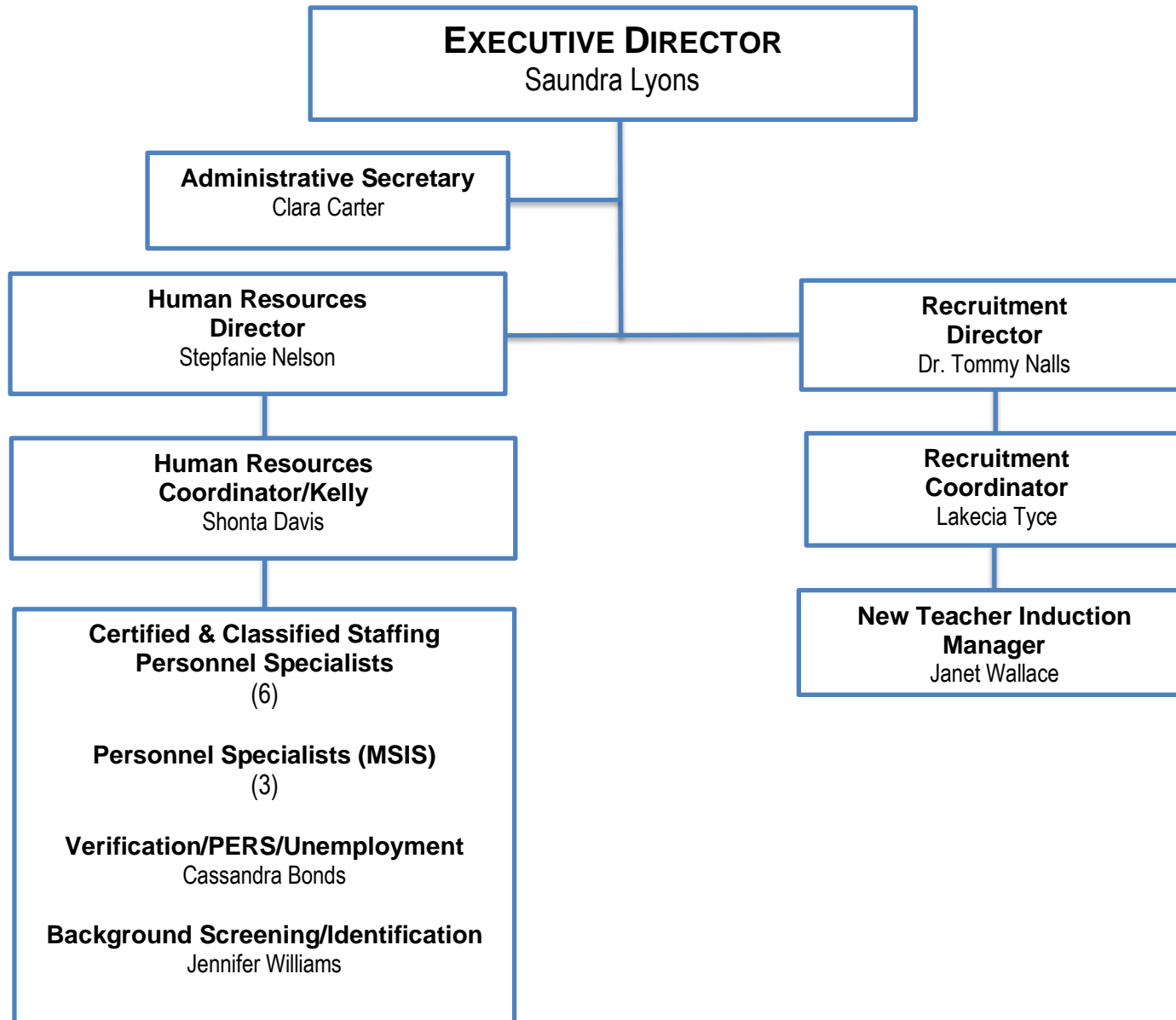
CHIEF OF STAFF



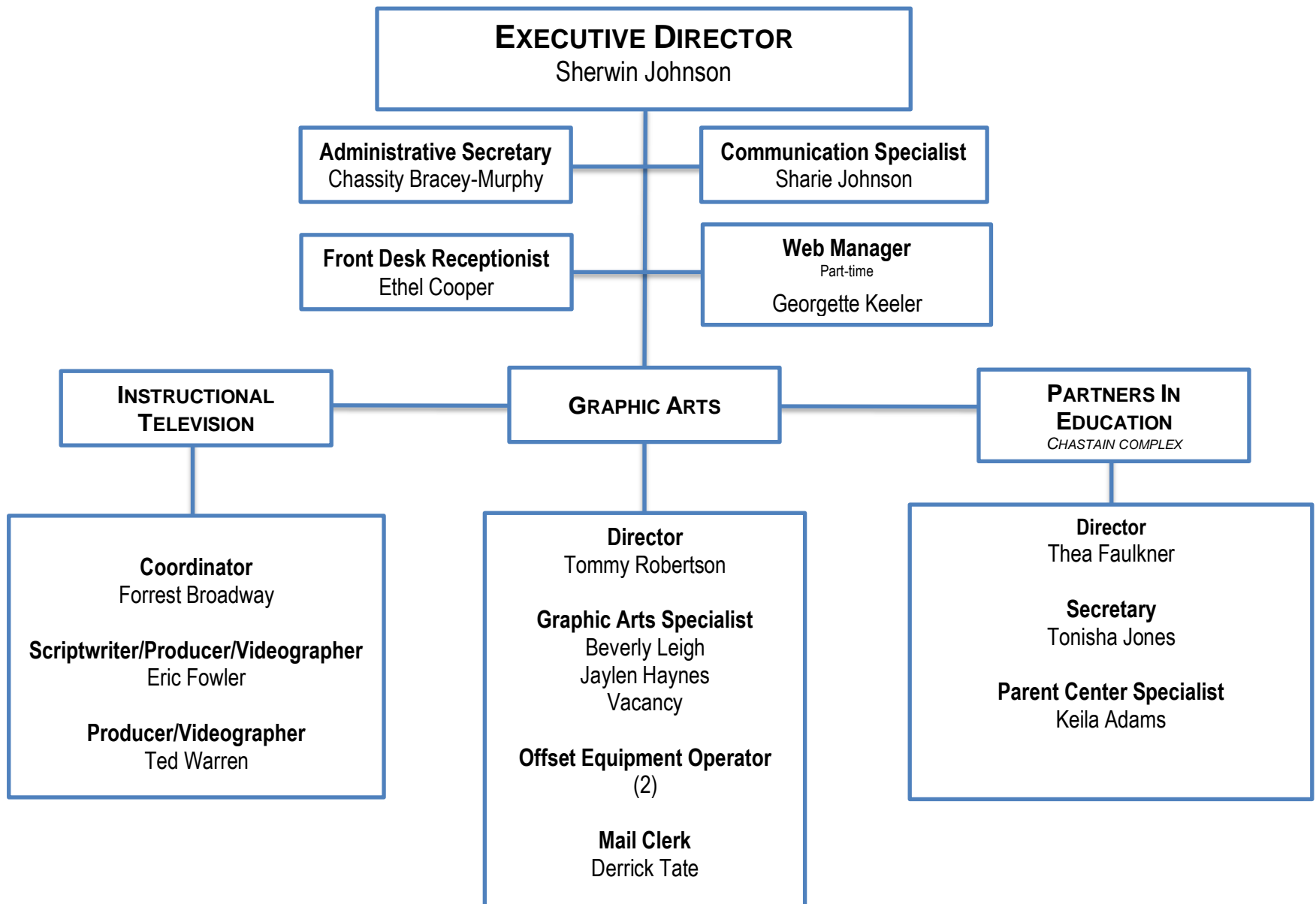
RESEARCH ENROLLMENT ACCOUNTABILITY



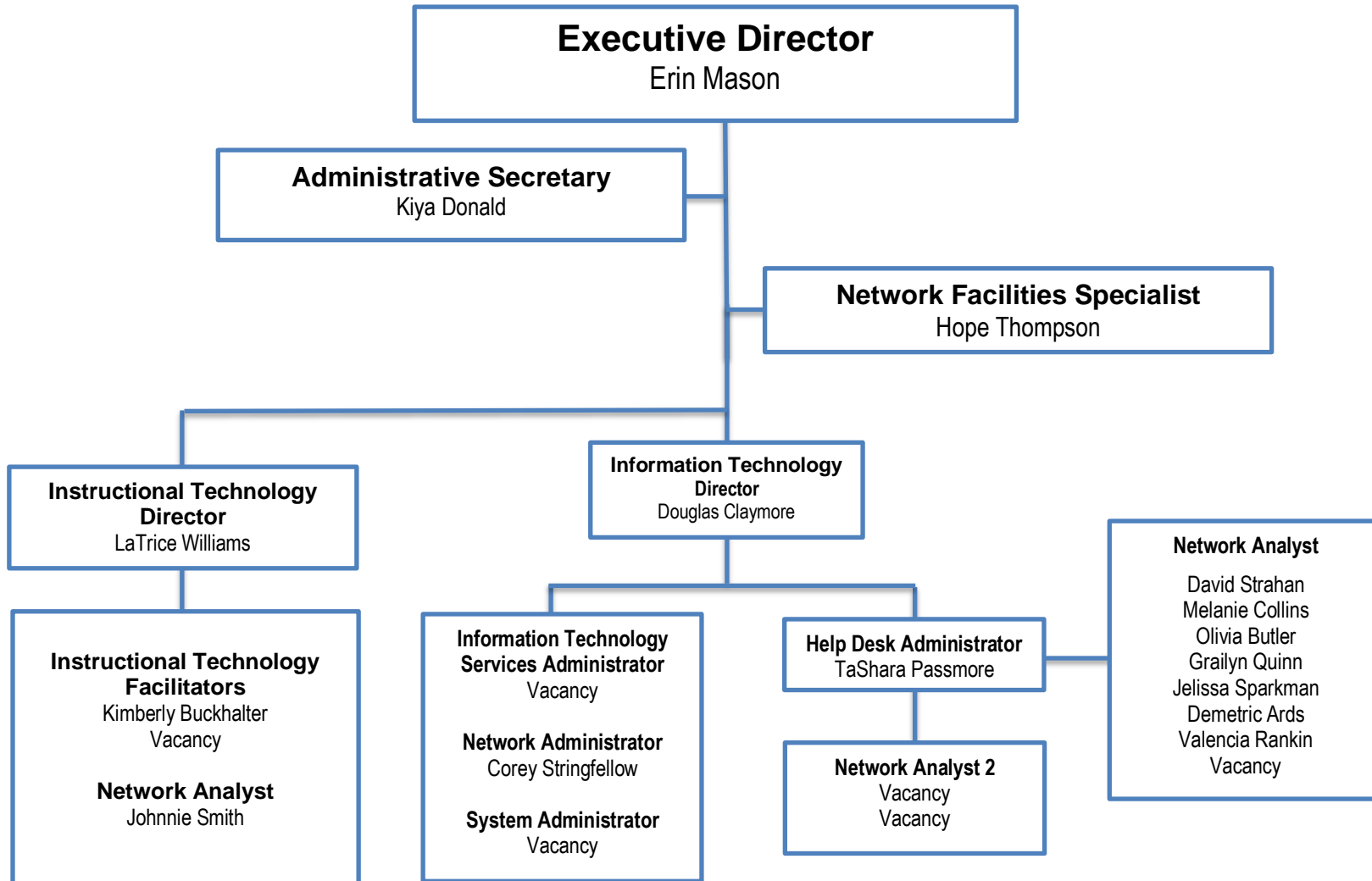
HUMAN RESOURCES



PUBLIC ENGAGEMENT



INFORMATION TECHNOLOGY SERVICES



FINANCE & OPERATIONS

Chief Finance & Operations Officer

Earl Burke

Central Office and Enoch Complex

Executive Assistant

Philis Fowler

Business Services Executive Director

Margaret Purnell

Facilities Operations Executive Director

Sandra Robinson

Child Nutrition Executive Director

Marc Rowe

Assets & Property Executive Director

Wilton Jackson

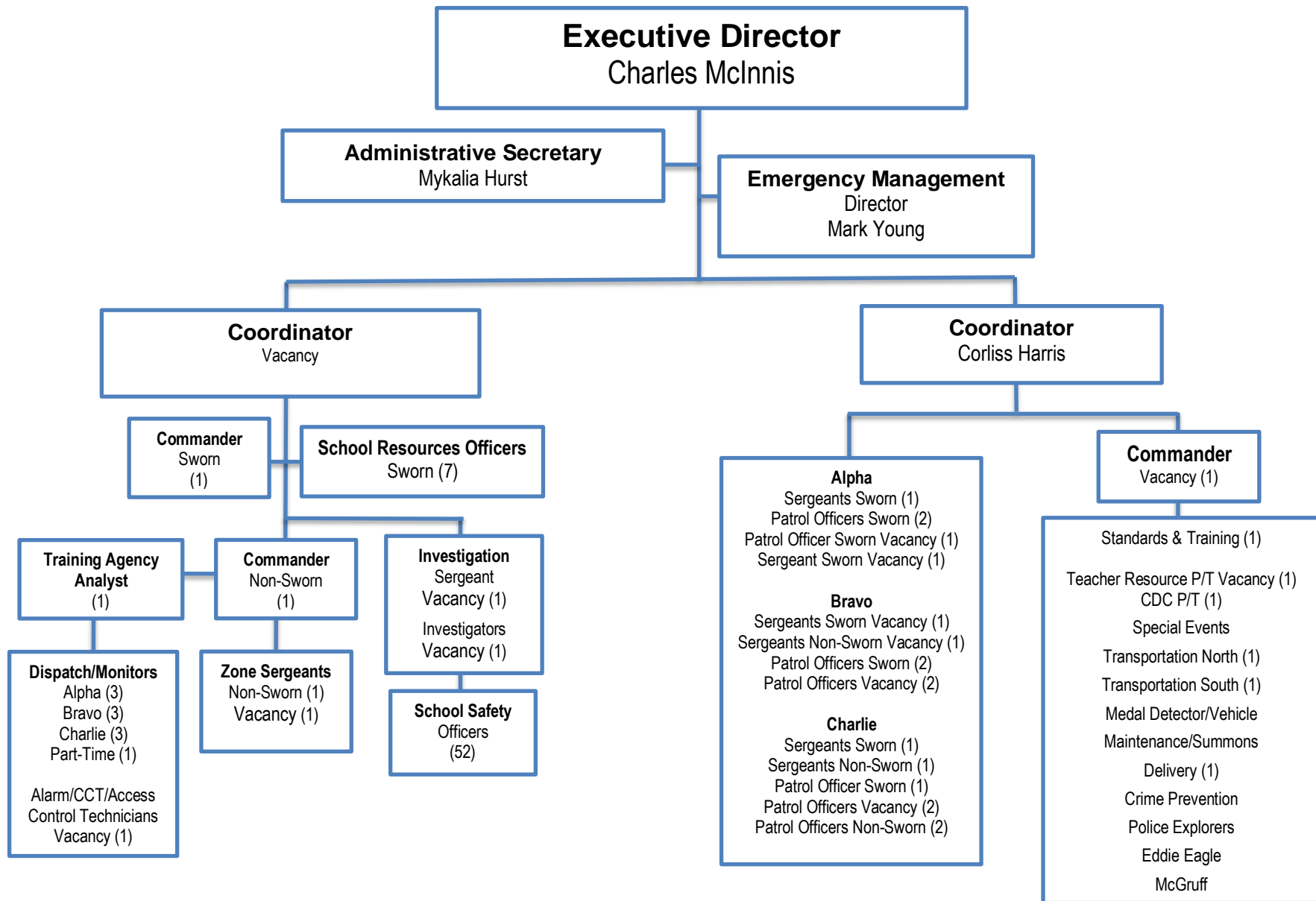
Campus Enforcement & Emergency Management Executive Director

Charles McInnis

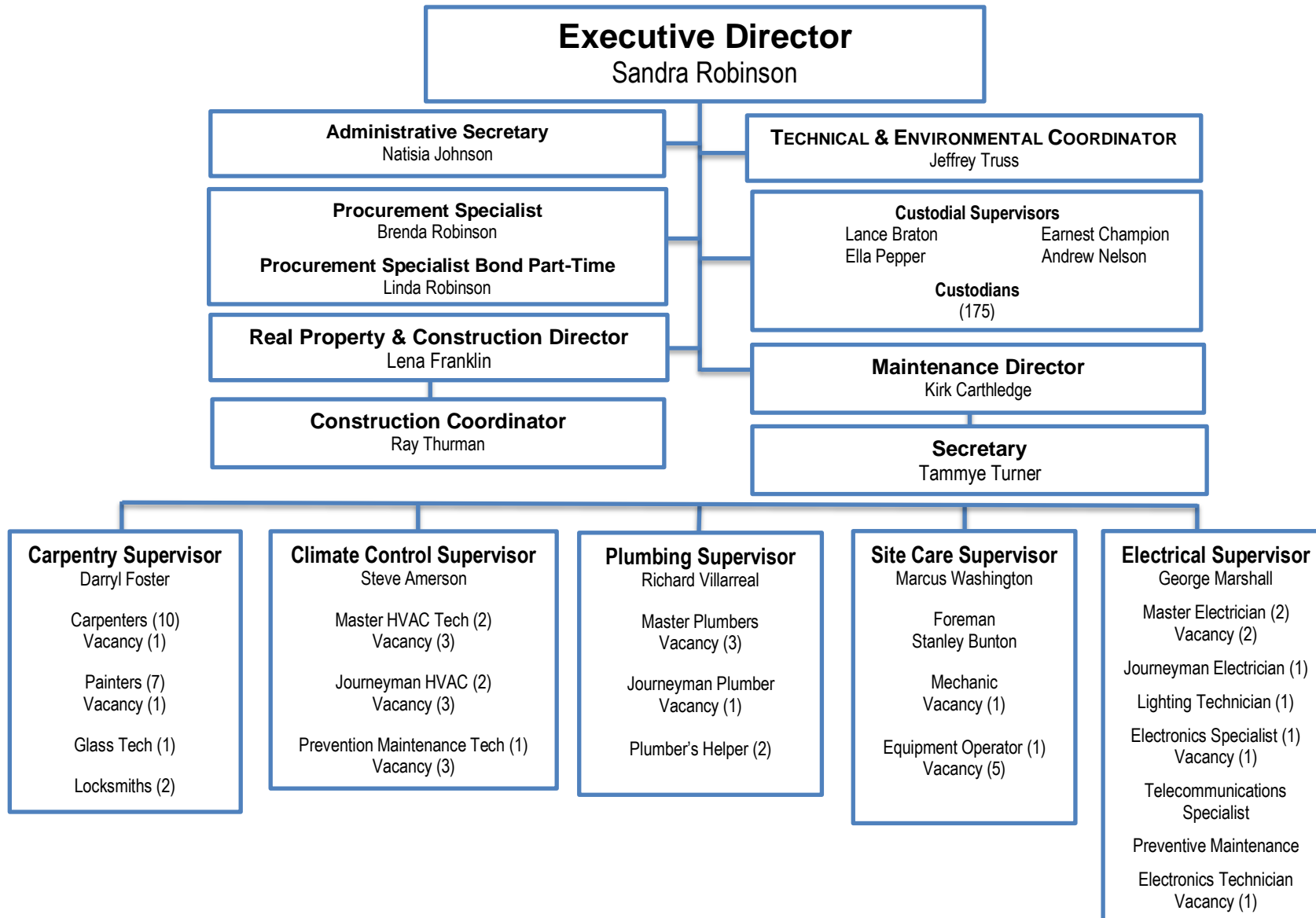
Transportation Executive Director

Stephanie Harris Martin

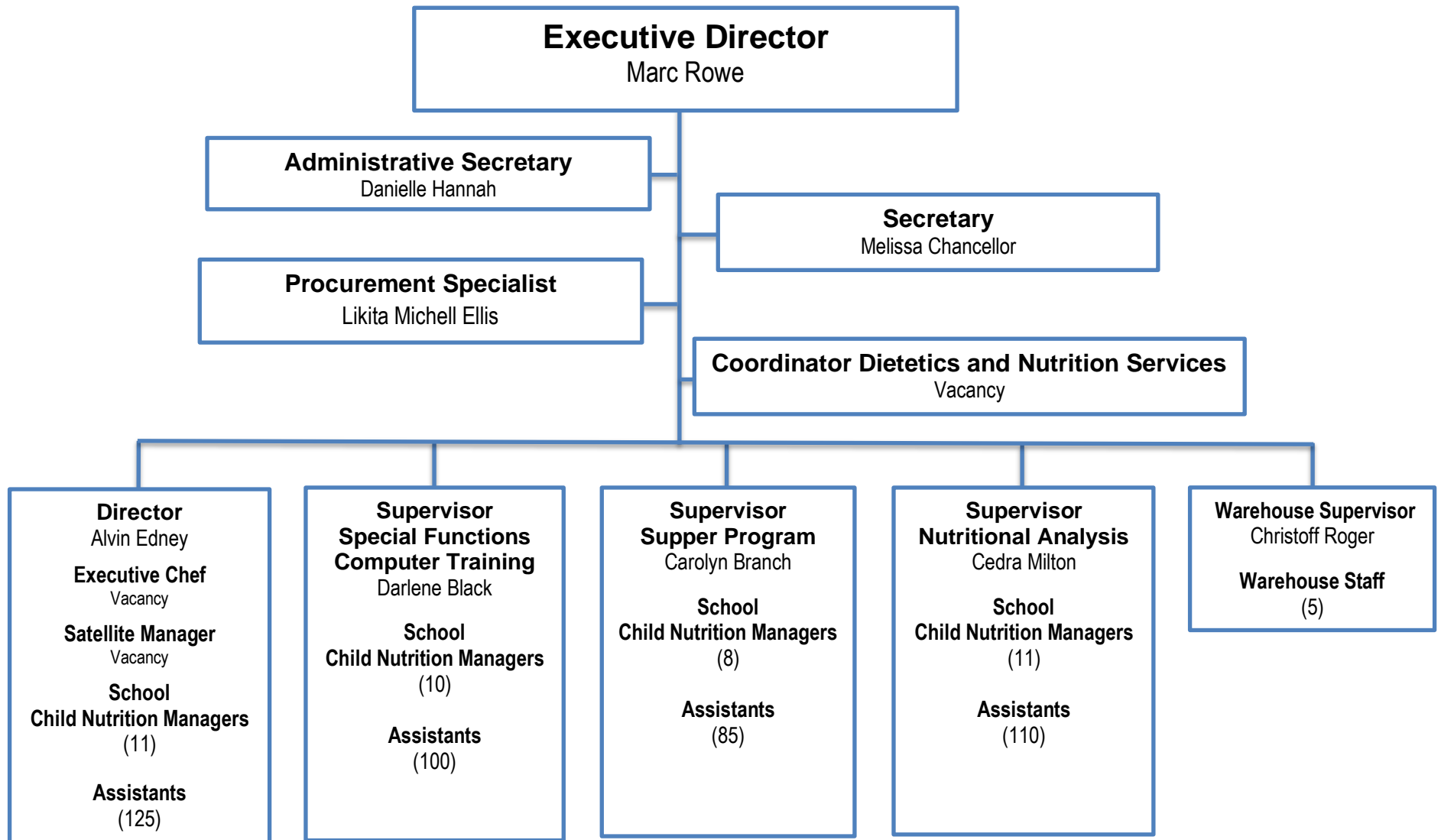
CAMPUS ENFORCEMENT



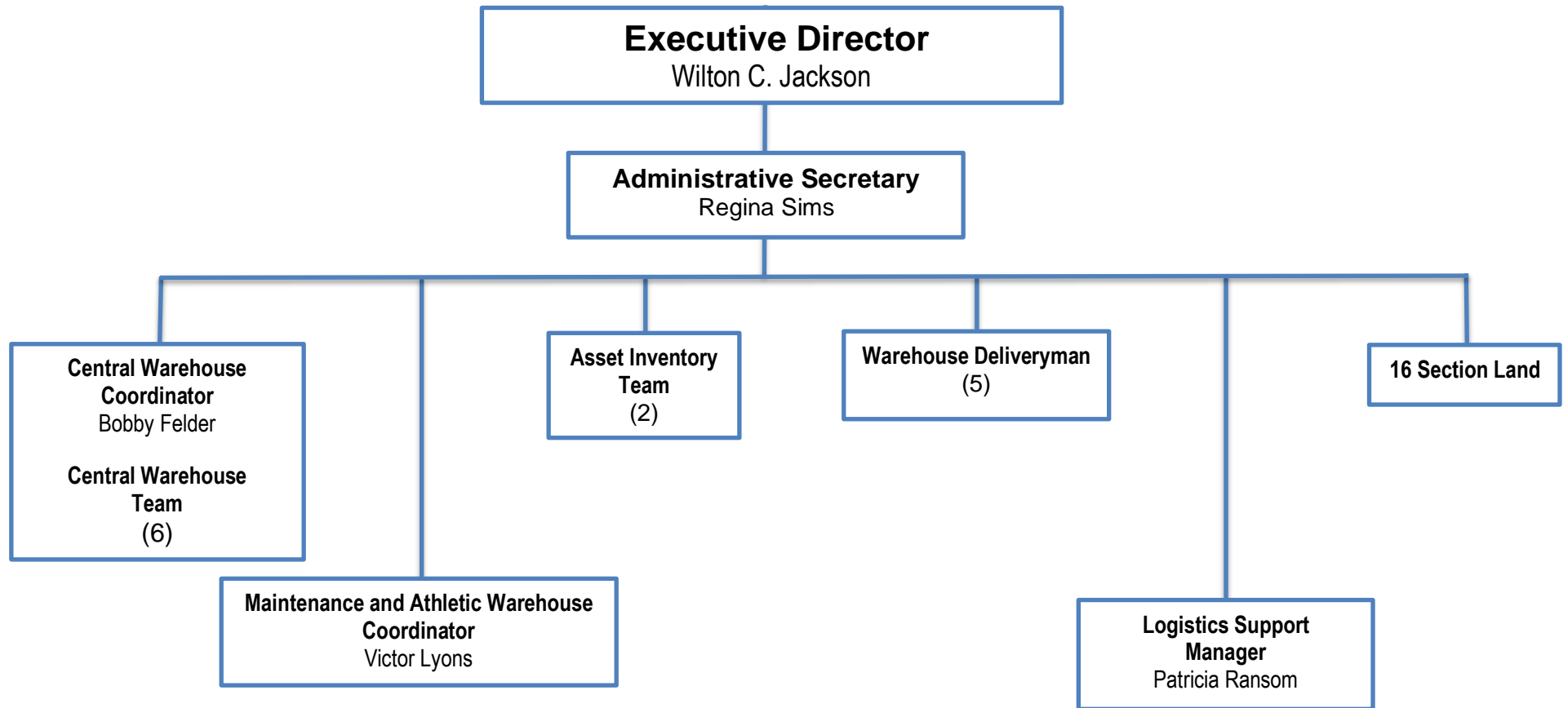
FACILITIES OPERATIONS



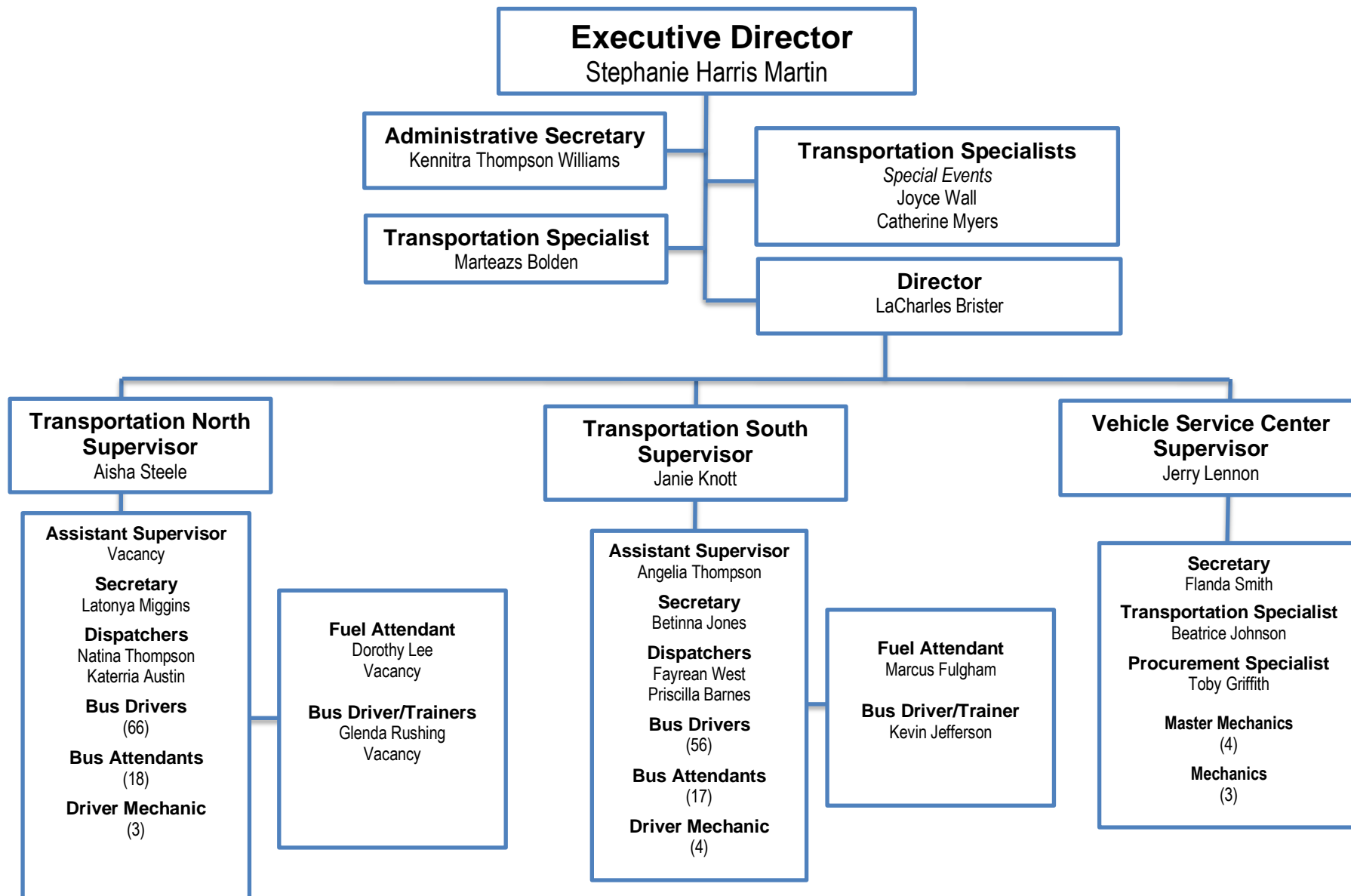
CHILD NUTRITION DEPARTMENT



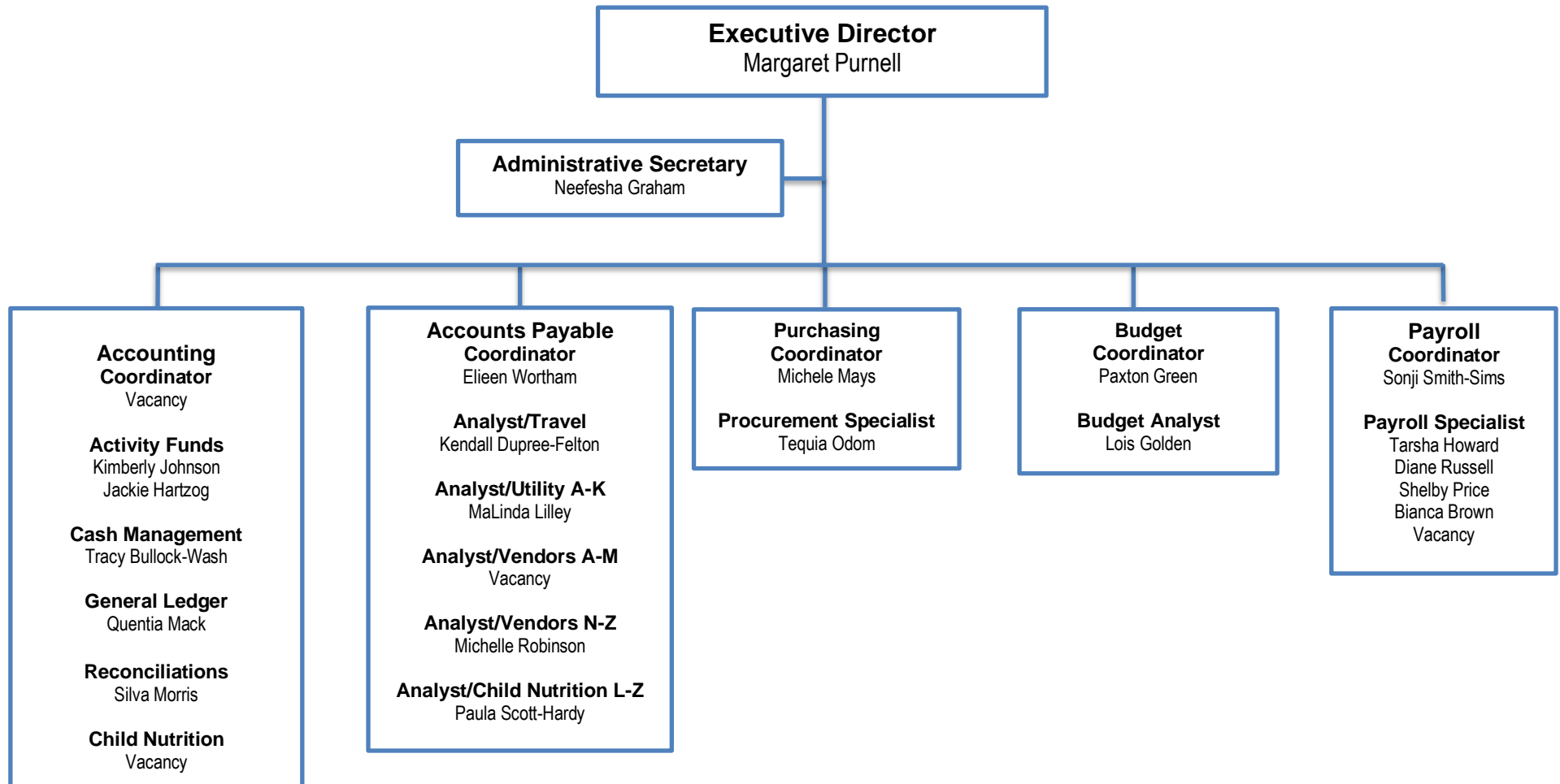
ASSETS AND PROPERTY



TRANSPORTATION DEPARTMENT



BUSINESS SERVICES



GENERAL COUNSEL

